



ATTENTION BROKERS
FOR LEASE

Spanaway Industrial Park
15413 1ST AVENUE COURT SOUTH
SPANAWAY, WA 97445



**Industrial & Office
Suites**

SpanawayIndustrialPark.com

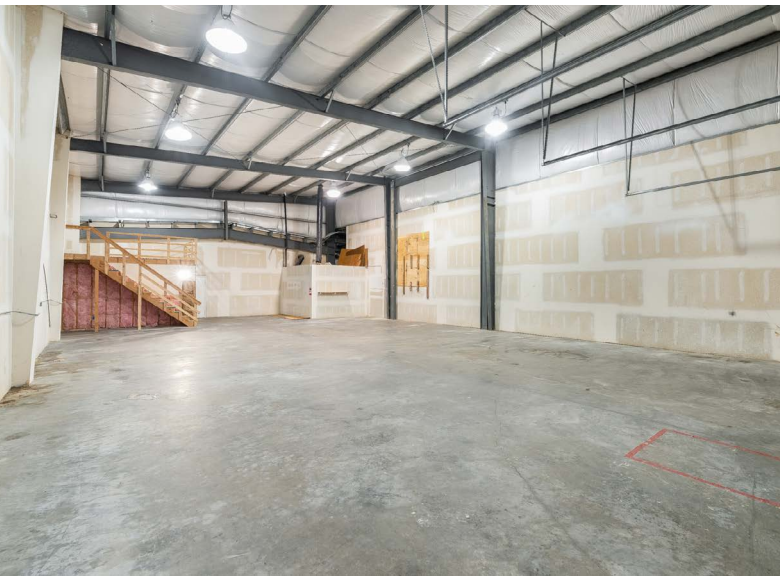
Spanaway Industrial Park

15413 1ST AVENUE COURT SOUTH
SPANAWAY, WA 97445

PROPERTY OVERVIEW

- The Spanaway Industrial Park features three single-story buildings comprising approximately 22,027 square feet of leasable space.
- The business park consists of industrial suites ranging in size from 960 square feet to 3,070 square feet.
- Each building is a metal butler-style, insulated, pitched-roof structure with high interior ceilings and wide spans. Many of the warehouse suites contain office build-out.

Located right off of I-205, the Spanaway Industrial Park is ideal for businesses that need office, warehouse, storage, or light, manufacturing/production space.



SpanawayIndustrialPark.com

Industrial/Flex Space – 1,200 Rentable Square Feet – Tacoma, WA

1,200
SQUARE FEET

\$20.45 /yr
RENT / SF

\$2,045
RENT

(253) 238-4833
www.SpanawayIndustrialPark.com



PROPERTY ADDRESS

15413 1st Avenue Court South - 2-A
Spanaway, WA 98445

LEASE TYPE: **NNN** AVAILABLE: **Now**

DESCRIPTION

Available from Grid Property Management, LLC.

Click here to apply: <https://tinyurl.com/GridPMAApplication>

Located right off Pacific Avenue South at 15413 First Avenue Court South in Tacoma, WA, the Spanaway Industrial Park is ideal for companies that need office, light manufacturing, professional services, auto repair, warehouse, or production space.

The Spanaway Industrial Park is made up of five buildings and comprises approximately 30,000 of leasable space.

Each building is a metal butler-style, insulated, pitched-roof structure with high interior ceilings and wide spans.

The Spanaway Industrial Park has recently undergone site-wide improvements including updated exterior lighting, extensive parking lot and landscape work, and installation of comprehensive 24/7 exterior digital security camera coverage.

The site has been divided into office suites ranging in size from 800 to 2,000 square feet and industrial suites from 1,200 to 3,300 square feet. Most of the warehouse suites contain office build-outs.

There is ample parking, and all tenants have assigned parking spaces.

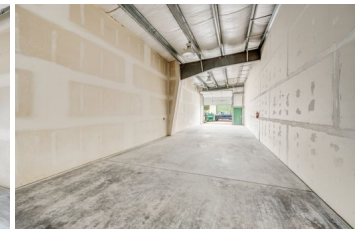
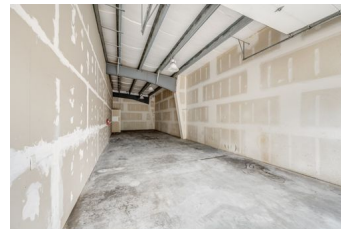
Suite 2A has 1,200 RSF perfect for warehouse, industrial, light manufacturing, storage, or light production.

AMENITIES

- Drive-In Roll-Up Door
- Pedestrian Door Entry
- High Ceiling Clearance
- Industrial
- Assigned Outdoor Parking

RENTAL TERMS

Rent	\$2,045
Security Deposit	\$2,500
Application Fee	\$0



View this listing online:



Office Space – 1,260 Rentable Square Feet – Tacoma, WA

1,260
SQUARE FEET

\$19.80 /yr
RENT / SF

\$2,079
RENT

(253)-238-4833
www.SpanawayIndustrialPark.com



PROPERTY ADDRESS

15413 1st Avenue Court South - 1-A
Spanaway, WA 98445

LEASE TYPE: **NNN** AVAILABLE: **Now**

DESCRIPTION

Available from Grid Property Management, LLC.

Click here to apply: <https://tinyurl.com/GridPMAApplication>

Located right off Pacific Avenue South at 15413 First Avenue Court South in Tacoma, WA, the Spanaway Industrial Park is ideal for companies that need office, light manufacturing, professional services, auto repair, warehouse, or production space.

The Spanaway Industrial Park is made up of five buildings and comprises approximately 30,000 of leasable space.

Each building is a metal butler-style, insulated, pitched-roof structure with high interior ceilings and wide spans.

The Spanaway Industrial Park has recently undergone site-wide improvements including updated exterior lighting, extensive parking lot and landscape work, and installation of comprehensive 24/7 exterior digital security camera coverage.

The site has been divided into office suites ranging in size from 800 to 2,000 square feet and industrial suites from 1,200 to 3,300 square feet. Most of the warehouse suites contain office build-outs.

There is ample parking, and all tenants have assigned parking spaces.

Suites 1A has combined 1,260 RSF of open floorplan office or flex space with private offices perfect for an office, flex, or retail

AMENITIES

- private offices
- assigned parking
- Visitor parking
- Open Floor Plan

RENTAL TERMS

Rent	\$2,079
Security Deposit	\$2,500
Application Fee	\$0



View this listing online:



Office Space – 1,260 Rentable Square Feet – Tacoma, WA

1,260
SQUARE FEET

\$19.80 /yr
RENT / SF

\$2,079
RENT

((253) 238-4833
www.SpanawayIndustrialPark.com



PROPERTY ADDRESS

15413 1st Avenue Court South - 1-B
Spanaway, WA 98445

COMMERCIAL TYPE: **Office** LEASE TYPE: **NNN**
AVAILABLE: **Now**

DESCRIPTION

Available from Grid Property Management, LLC.

Click here to apply: <https://tinyurl.com/GridPMAApplication>

Located right off Pacific Avenue South at 15413 First Avenue Court South in Tacoma, WA, the Spanaway Industrial Park is ideal for companies that need office, light manufacturing, professional services, auto repair, warehouse, or production space.

The Spanaway Industrial Park is made up of five buildings and comprises approximately 30,000 of leasable space.

Each building is a metal butler-style, insulated, pitched-roof structure with high interior ceilings and wide spans.

The Spanaway Industrial Park has recently undergone site-wide improvements including updated exterior lighting, extensive parking lot and landscape work, and installation of comprehensive 24/7 exterior digital security camera coverage.

The site has been divided into office suites ranging in size from 800 to 2,000 square feet and industrial suites from 1,200 to 3,300 square feet. Most of the warehouse suites contain office build-outs.

There is ample parking, and all tenants have assigned parking spaces.

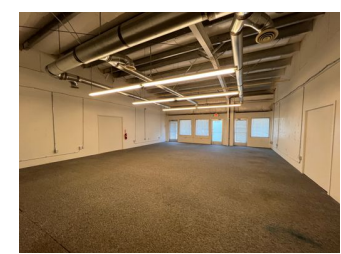
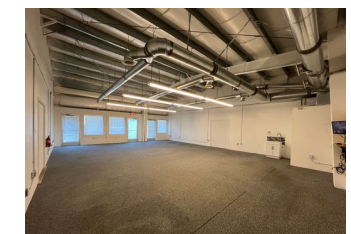
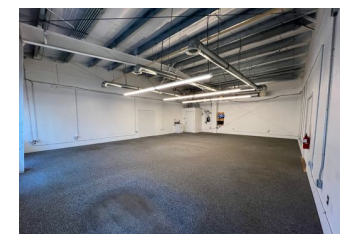
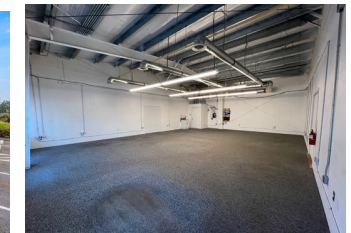
Suites 1B has 1,260 RSF of open floorplan office or flex space with private offices perfect for an office, flex, or retail business.

AMENITIES

- Visitor parking
- Open Floor Plan
- Private Offices
- Ample Parking
- Assigned Outdoor Parking

RENTAL TERMS

Rent	\$2,079
Security Deposit	\$2,500
Application Fee	\$0



Office Space – 772 Rentable Square Feet – Tacoma, WA

772
SQUARE FEET

\$19.80 /yr
RENT / SF

\$1,273.8
RENT

(253) 238-4833
www.SpanawayIndustrialPark.com



PROPERTY ADDRESS

15413 1st Avenue Court South - 2-D
Spanaway, WA 98445

LEASE TYPE: **NNN** AVAILABLE: **Now**

DESCRIPTION

Available from Grid Property Management, LLC.

Click here to apply: <https://tinyurl.com/GridPMAApplication>

Located right off Pacific Avenue South at 15413 First Avenue Court South in Tacoma, WA, the Spanaway Industrial Park is ideal for companies that need office, light manufacturing, professional services, auto repair, warehouse, or production space.

The Spanaway Industrial Park is made up of five buildings and comprises approximately 30,000 of leasable space.

Each building is a metal butler-style, insulated, pitched-roof structure with high interior ceilings and wide spans.

The Spanaway Industrial Park has recently undergone site-wide improvements including updated exterior lighting, extensive parking lot and landscape work, and installation of comprehensive 24/7 exterior digital security camera coverage.

The site has been divided into office suites ranging in size from 800 to 2,000 square feet and industrial suites from 1,200 to 3,300 square feet. Most of the warehouse suites contain office build-outs.

There is ample parking, and all tenants have assigned parking spaces.

Suite 2D has 772 RSF of open floorplan office or flex space perfect for an office, flex, or retail business.

AMENITIES

- Ample Parking
- High Ceiling Clearance
- Flex Space
- Open Floor Plan
- Shared Restrooms

RENTAL TERMS

Rent	\$1,273.80
Security Deposit	\$1,800.00
Application Fee	\$0.00



View this listing online:



Office Space – 2,400 Rentable Square Feet – Tacoma, WA

2,400
SQUARE FEET

\$20.45 /yr
RENT / SF

\$4,090
RENT

(253) 321-238

www.SpanawayIndustrialPark.com



PROPERTY ADDRESS

15413 1st Avenue Court South - 3 -A, 3-B
Spanaway, WA 98445

LEASE TYPE: NNN AVAILABLE: 8/30/24

DESCRIPTION

Available from Grid Property Management, LLC.

Click here to apply: <https://tinyurl.com/GridPMAApplication>

Located right off Pacific Avenue South at 15413 First Avenue Court South in Tacoma, WA, the Spanaway Industrial Park is ideal for companies that need office, light manufacturing, professional services, auto repair, warehouse, or production space.

The Spanaway Industrial Park is made up of five buildings and comprises approximately 30,000 of leasable space.

Each building is a metal butler-style, insulated, pitched-roof structure with high interior ceilings and wide spans.

The Spanaway Industrial Park has recently undergone site-wide improvements including updated exterior lighting, extensive parking lot and landscape work, and installation of comprehensive 24/7 exterior digital security camera coverage.

The site has been divided into office suites ranging in size from 800 to 2,000 square feet and industrial suites from 1,200 to 3,300 square feet. Most of the warehouse suites contain office build-outs.

There is ample parking, and all tenants have assigned parking spaces.

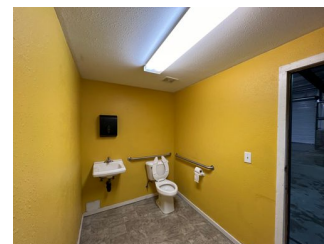
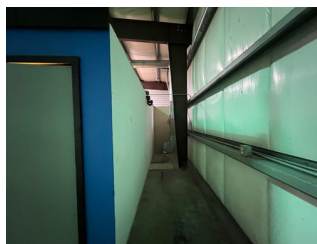
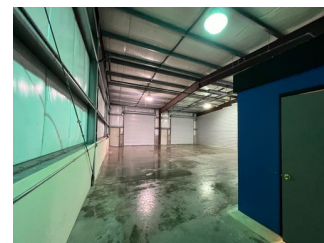
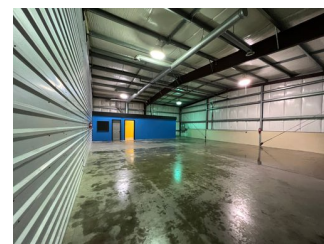
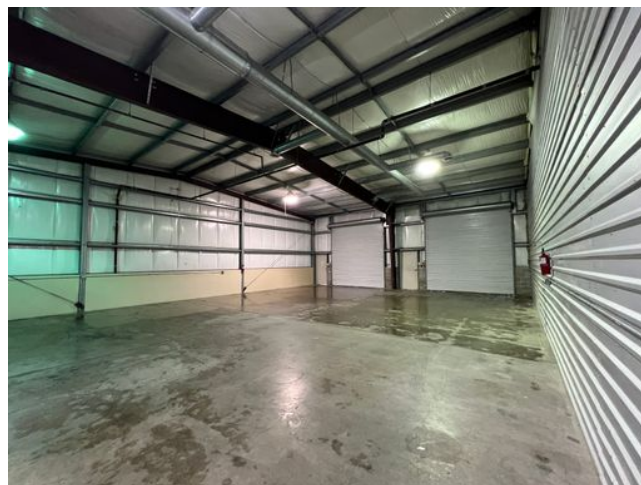
Suites 3A and 3B have a combined 2,400 RSF of open floorplan office or flex space with a private office and private restroom

AMENITIES

- Double Garage
- Double bay
- Office Space
- Private Restroom

RENTAL TERMS

Rent	\$4,090
Security Deposit	\$0
Application Fee	\$0



View this listing online:

Spanaway Industrial Park

15413 1ST AVENUE COURT SOUTH
SPANAWAY, WA 97445

OFFICE SUITES WITH WAREHOUSE SPACE

**Is your client the perfect fit?
Let's talk today.**

LeasingTeam@GridPropertyManagement.com
253-238-4833

Individual suite information is available at
SpanawayIndustrialPark.com



Grid Property Management is a property management firm that specializes in the management of commercial and industrial properties.